



AmbleSide

AT DAVIDSON

Company Overview

- Local Builder
- Established in 1996
- Our 3rd Community in Davidson
- Classic architecture with attention to detail
- Known for large communities and special infill projects

Past Project:
Antiquity
Cornelius

Meeting Street
MODEL HOME
Hours:
Mon-Sat. 11am-6pm
Sunday 1pm-5pm
704-714-0610
www.meetingstreet.net



Past Project:
Antiquity
Cornelius



Past Project:
Antiquity
Cornelius



Past Project:
Davidson Gateway
Davidson



Past Project:
Selwyn & Carlanda
Myers Park



Current Project:
Brighton Park
Mint Hill

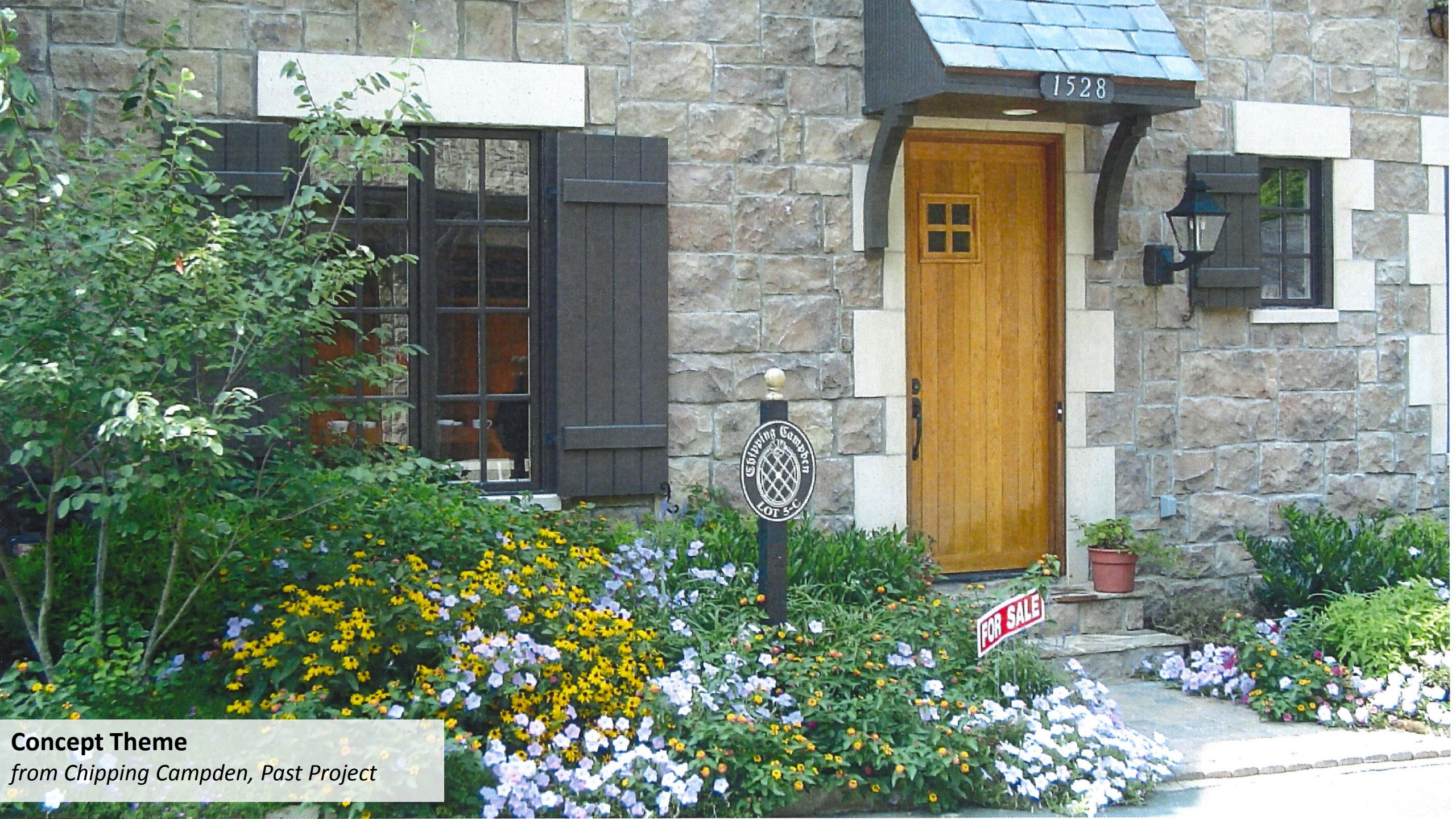


3329

Current Project:
Brighton Park
Mint Hill



Current Project:
Ayrsley
Charlotte



Concept Theme
from Chipping Campden, Past Project



Concept Theme
from Chipping Campden, Past Project



Concept Theme
from Chipping Campden, Past Project



Concept Theme
from Chipping Campden, Past Project



Concept Theme
from Chipping Campden, Past Project



Concept Theme
from Chipping Campden, Past Project



Concept Theme
from Chipping Campden, Past Project

Chipping Campden Video

Vision for Ambleside



or Club

Davidson Day School

Brickhouse Tavern

Roosevelt
Wilson Park

Griffith St

Davidson
College

Kindred

Davidson
Concord Rd

2402

2197

S Main St

Grey Rd
Concord Rd

Fa
Squa

IR Ingersoll Rand



DAVIDSON



Davidson Elementary



Roosevelt Wilson Park



Grocery, Shops & Dining



Parham Park



Ambleside
AT DAVIDSON

Exit 30



Google

35°29'36"N 80°52'40"W 3,961 ft

Ambleside Video





Concept Theme
from The Lake District, U.K.



Concept Theme
from The Lake District, U.K.



Concept Theme
from The Lake District, U.K.



Concept Theme
from The Lake District, U.K.



Concept Theme
from The Lake District, U.K.



Concept Theme
from The Lake District, U.K.





Concept Theme
from The Lake District, U.K.



gettyimages®
James Emmerson / robertharding

Community Design







Home Details

Ambleside

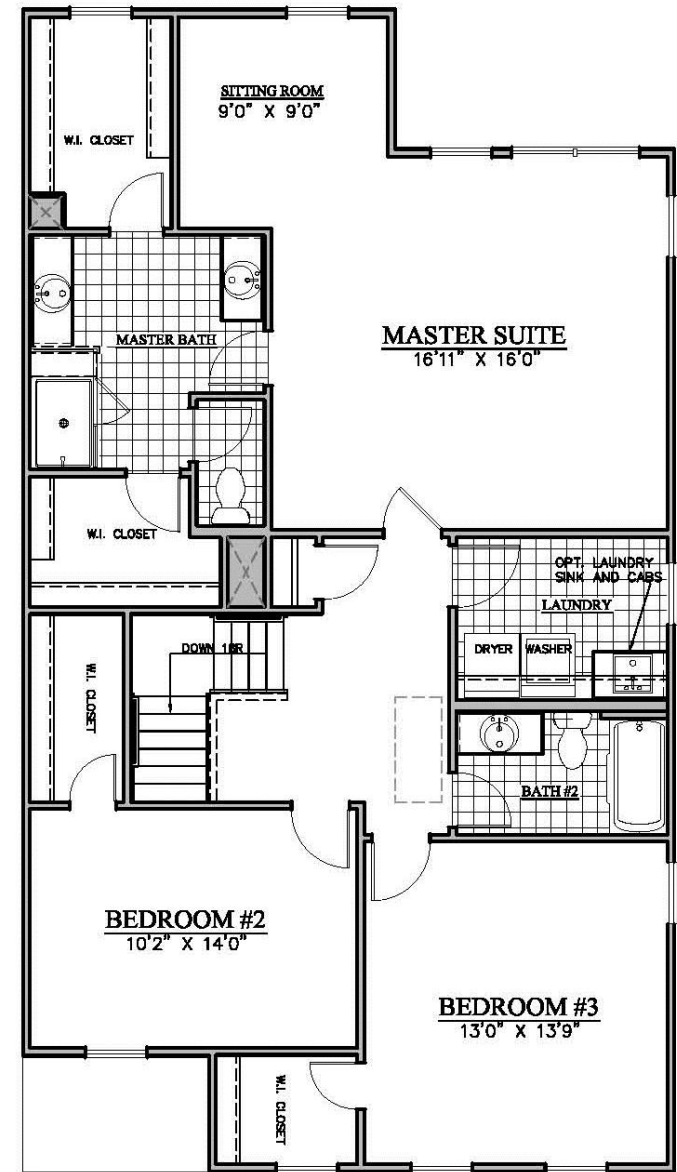
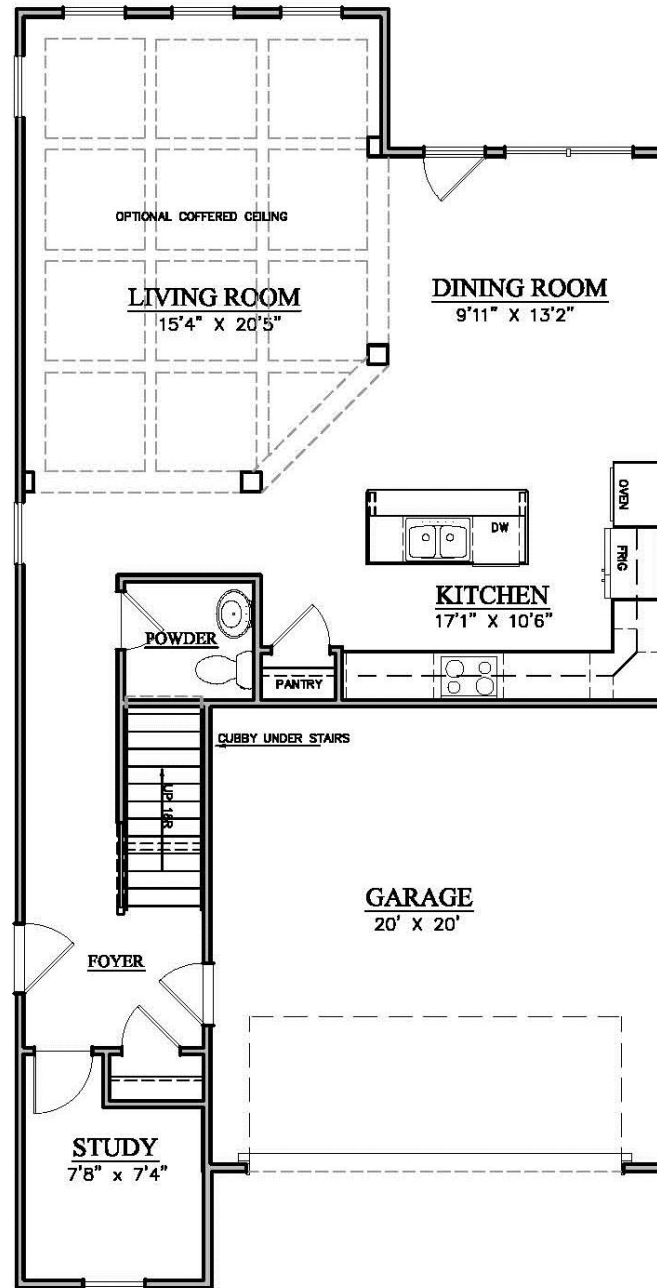
AT DAVIDSON





The Cartmel

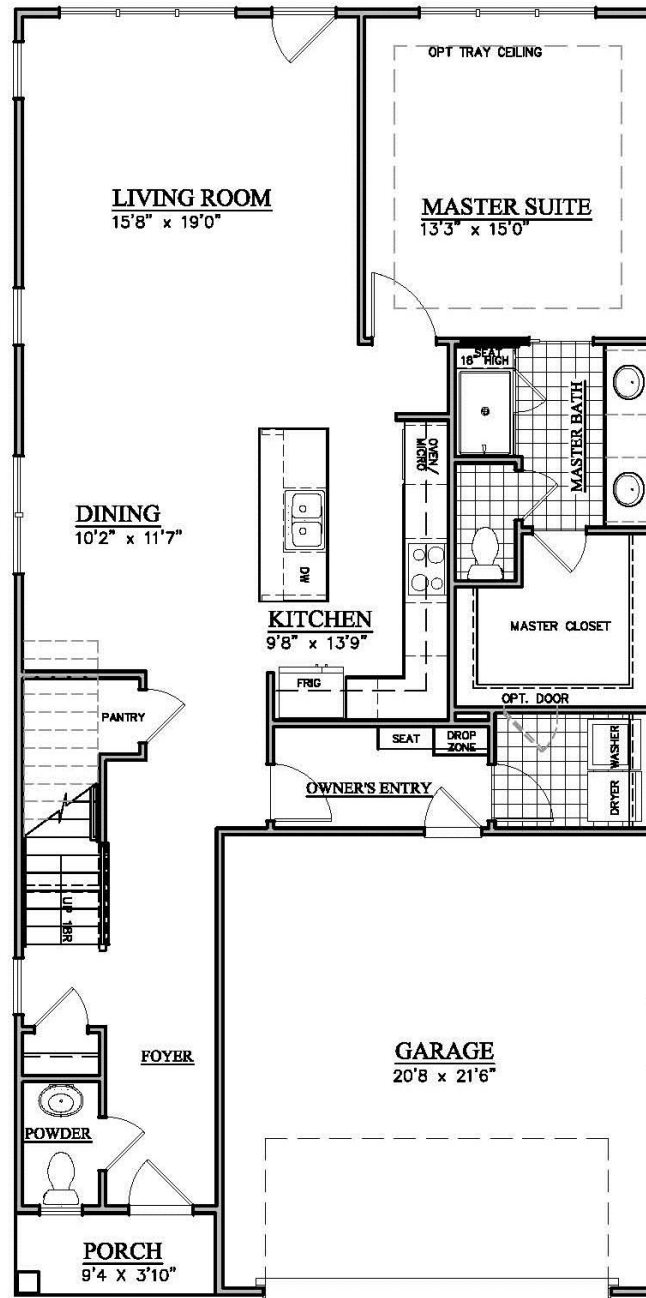
The Cartmel



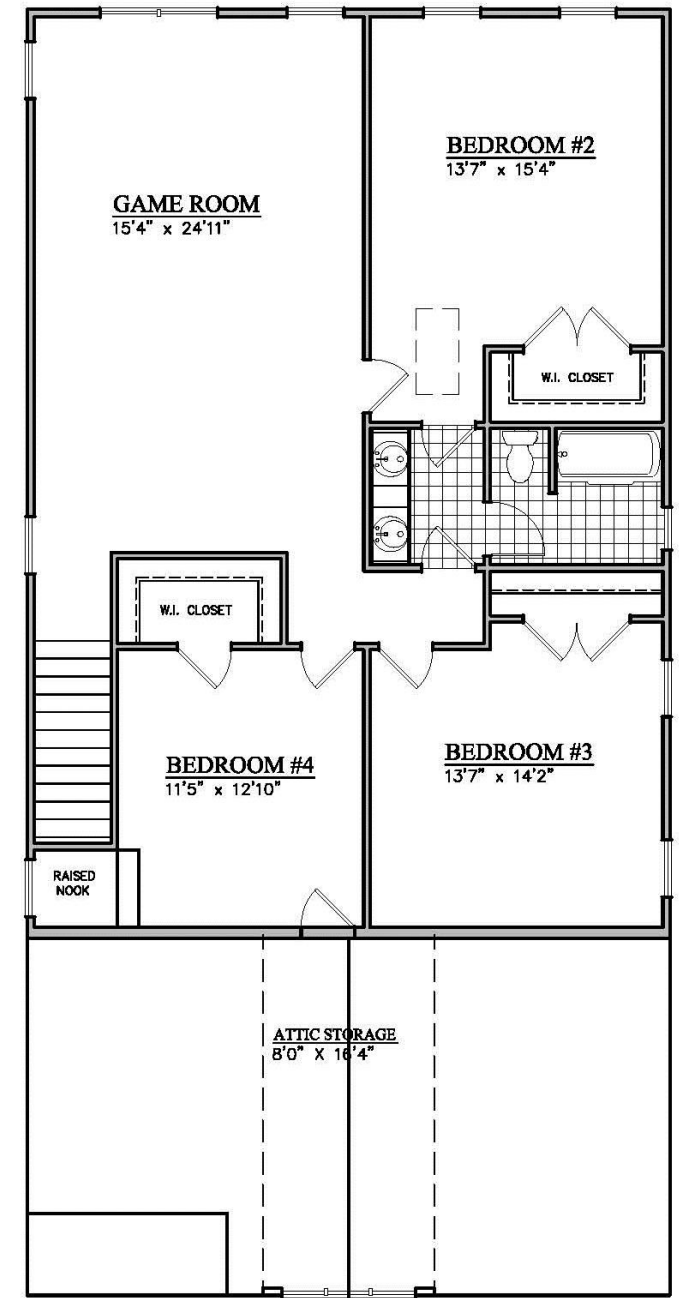


The Grasmere

The Grasmere



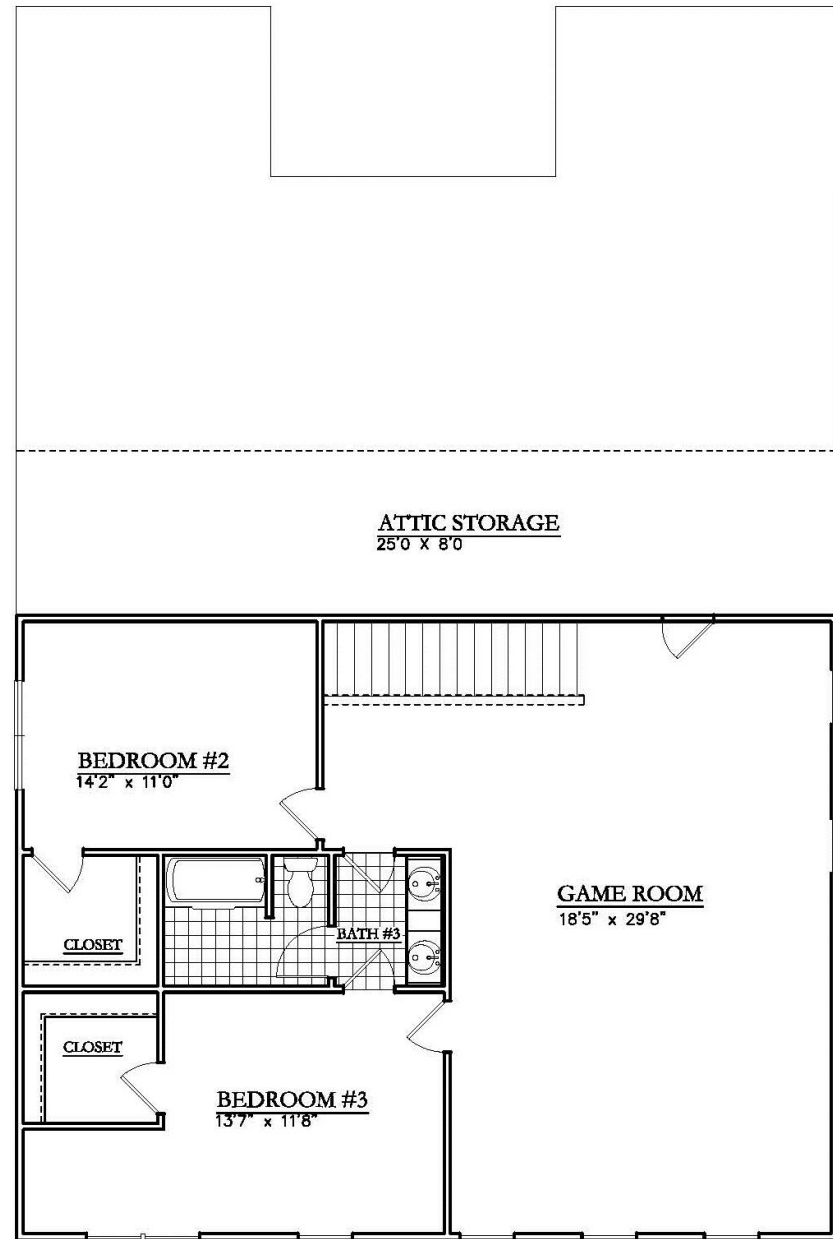
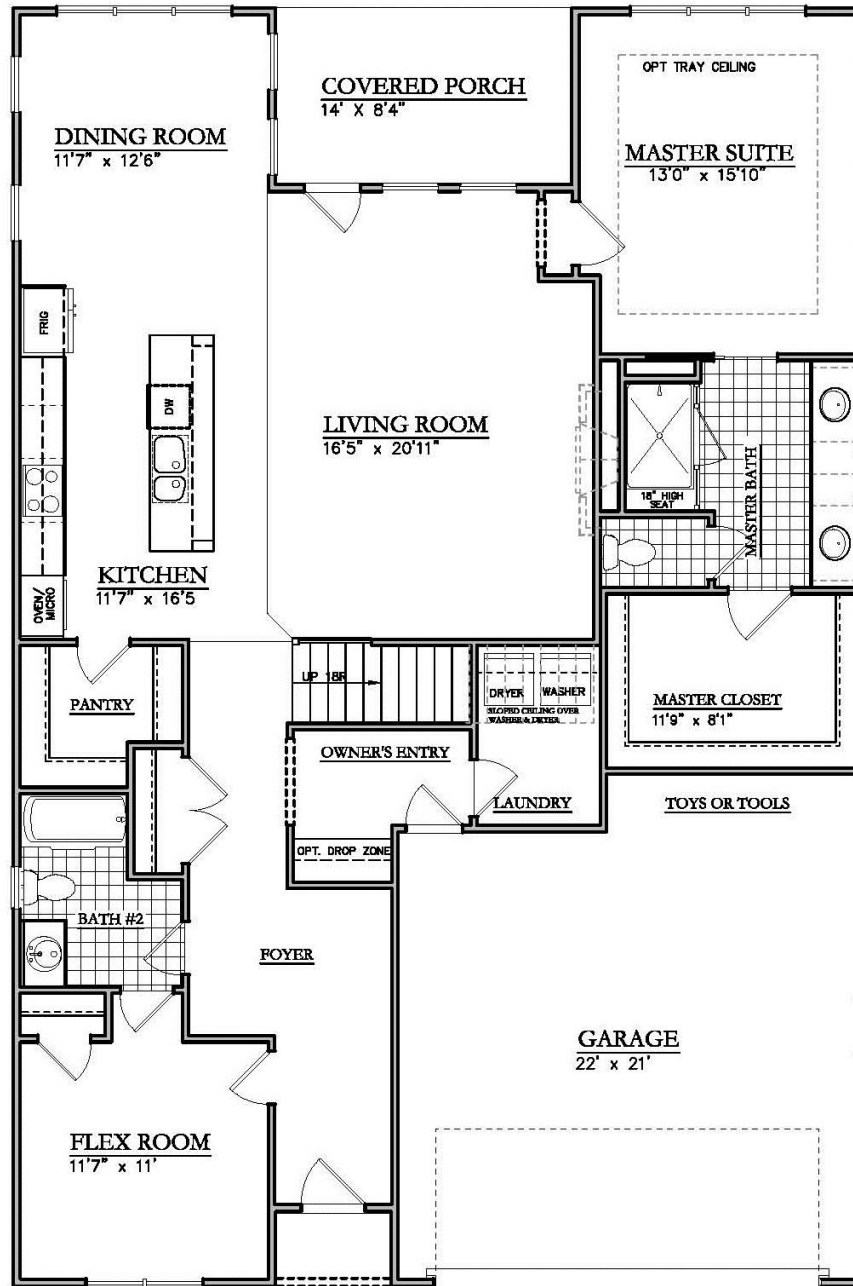
1ST FLOOR



2ND FLOOR

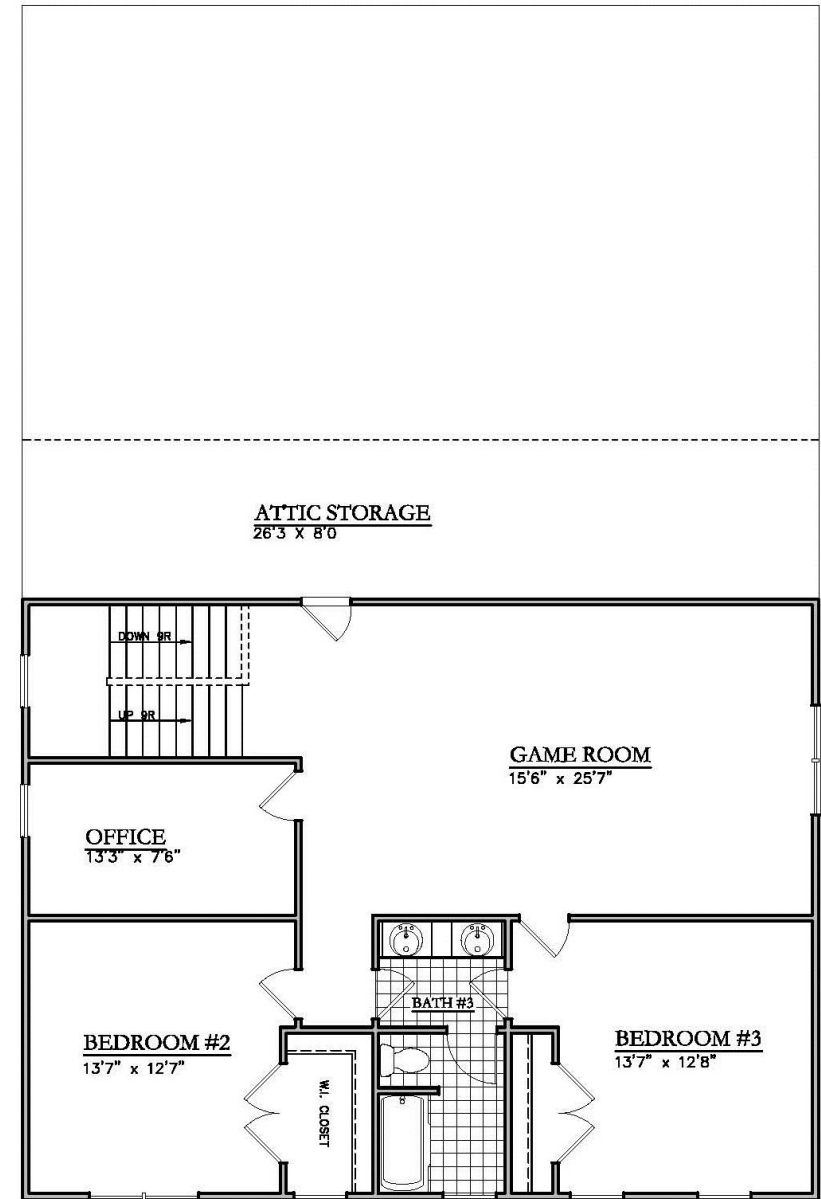
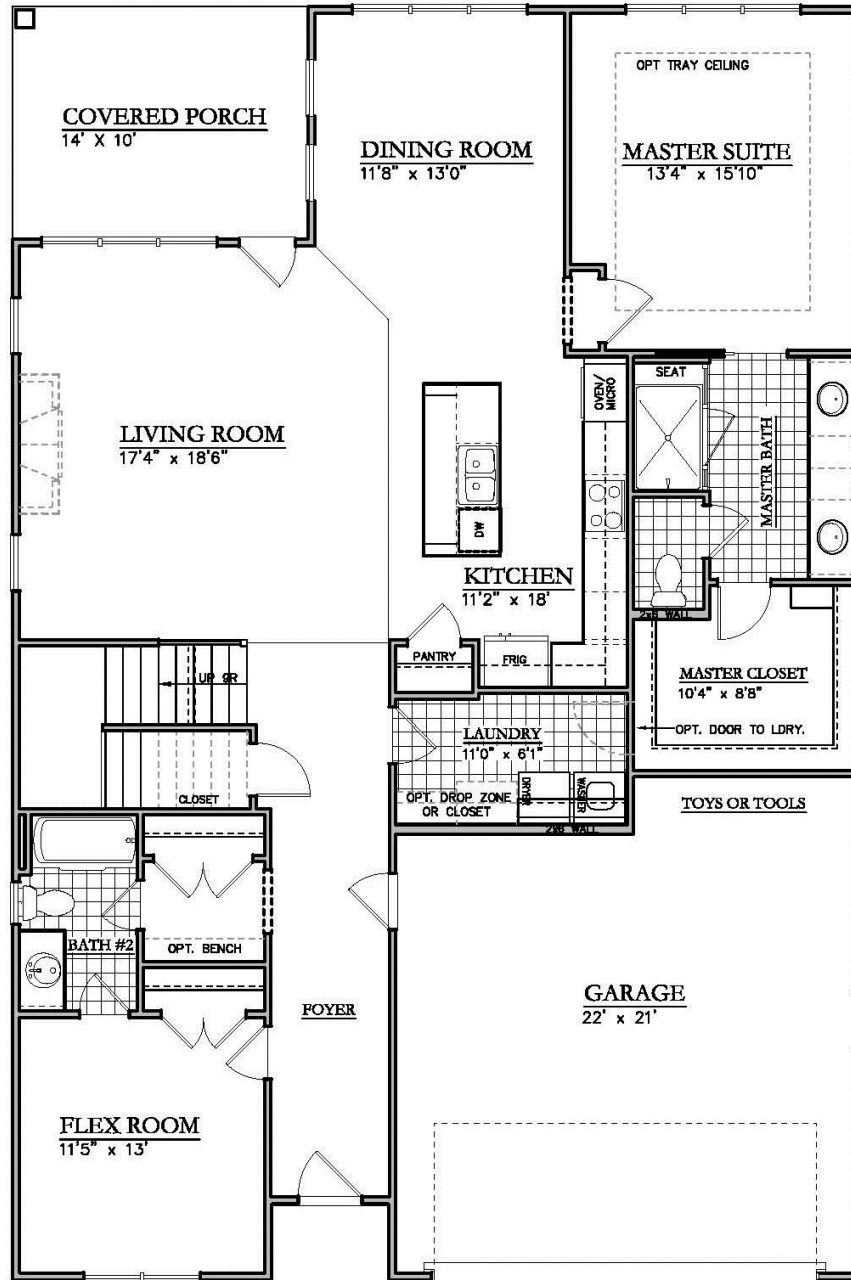


The Kendal / The Keswick





The Kendal / The Keswick





Luxury Included
Features

Every home includes...

- Customize selections and colors at design center
- Multiple trim packages
- Multiple appliance packages
- Custom lighting allowance
- Smart home and energy efficient features

Price Range

- Cartmel (2265 sq. ft.) – mid to upper \$600s
- Grasmere (2623 sq. ft.) – mid \$700s
- Kendal (2981) and Keswick (2945) – low \$800s
- First buyers receive the best pricing

Ambleside Timeline

Construction
Begins

December
2019

Early - Mid
2020

Community is
Completed

Early
2021

1st
Homeowners
Move In



AmbleSide
AT DAVIDSON

THANK YOU!